

133144



CONTRO-E SPEED

OWNER'S MANUAL SUPPLEMENT

cannondale

Cannondale Supplements

This manual is a “supplement” to your Cannondale Bicycle Owner’s Manual. This supplement provides additional and important model specific safety, maintenance, and technical information. It may be one of several important manuals/supplements for your bike; obtain and read all of them.

Please contact your Cannondale Dealer immediately if you need a manual or supplement, or have a question about your bike. You may also contact us using the appropriate country/region/location information. See Contacting Cannondale in this supplement.

You can download Adobe Acrobat PDF versions of any manual/supplement from our website: www.cannondale.com

This supplement contains information for the following models:

MODEL CODE	MODEL DESCRIPTION	COMPLIANCE
C62156M6001	CONTR0-e SPEED 26" Small	EU Directive: 2002/24/EG
C62156M6002	CONTR0-e SPEED 26" Medium	
C62156M6003	CONTR0-e SPEED 26" Large	
C62156M6001	CONTR0-e SPEED 26" Small	EU Directive: 2002/24/EG
C62156M6002	CONTR0-e SPEED 26" Medium	
C62156M6003	CONTR0-e SPEED 26" Large	

BOSCH eBike Manuals

The manufacturer’s owner’s manuals and instructions for the operation and maintenance of the drive-assist system are available as electronic downloads (in Adobe Acrobat PDF format) from our website. Obtain and read these materials BEFORE you operate the bike.

Go to : <http://www.bosch-ebike.de>



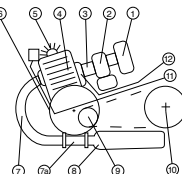
e1 *2002/24*XXXX

* XRD11152XBF100001 *

--- db(A) - ---min-1

Make: Cannondale
Vehicle Category: A

- 1.-- 10. 34Z, 30z
- 2.-- 26Z, 23Z
- 3.-- 21Z, 19Z
- 4.-- 17Z, 15Z
- 5.-- 13Z, 11Z
- 6. 0.275.007.031 11. --
- 7.-- 12. --
- 7.a --
- 8.--
- 9. 20Z



CONTENTS

SAFETY INFORMATION	2-3
PARTS OF THE E-SERIES BIKE	4
MAINTENANCE / CLEANING / TORQUE	5-6
GEOMETRY / SPECIFICATIONS	7
REPLACEMENT PARTS	8

Explicit Definitions

In this supplement, particularly important information is presented in the following ways:



WARNING

Indicates a hazardous situation which, if not avoided, could result in death or serious injury.

NOTICE

Indicates special precautions that must be taken to avoid damage.

Contacting Cannondale

Cycling Sports Group Europe B.V
Mail: Postbus 5100
Visits: Hanzepoort 27
7570 GC, OLDENZAAL, Netherlands
Tel: +41 61 551 14 80
Fax: +31 54 151 42 40

EN
GE
FR
IT
ES
NL

SAFETY INFORMATION

Intended Use

Your Speed E-Bike has an electric pedal assist drive system. It's classified as moped. In EU countries, the Speed E-Bike is known legally as a vehicle of the class L1e.

The drive assist system consists of a drive unit, a battery, a computer control, and various electronic components (harness wires, sensors, and switches). Your E-Series bike does share components common with pedal-only bikes.

It is important to know that when the assist system is turned ON, the drive unit engages to provide power only while you are pedaling. The amount of power provided by the drive unit depends on your pedaling force and the assistance mode/level you set with the handlebar control unit. At any time, if you stop pedaling, the drive assist will dis-engage. In all modes/levels, the drive assist system power reduces progressively and cuts off as the bike reaches a speed of 45 km/h. (27.9 mph), or sooner if you stop pedaling. The drive-assist re-engages when speed drops below 45 km/h. (27.9 mph) as long as the pedals are turning. Whenever the drive assist system is turned OFF, You can pedal the bike normally. The drive system will not engage.

CONTR0-E SPEED ASTM CONDITION 2, General Purpose Riding	INTENDED: For paved roads and paths approved for vehicle of the category L1e. NOT INTENDED: For off-road or mountain bike use, or for any kind of jumping.
---	---

Maximum Weight Limit (Lbs/Kg)

RIDER	LUGAGE	TOTAL
280/127	55/25	330/150

WARNING

****INTENDED USE:** This bicycle is intended to be used as a commuter bicycle. The speed E-Bike complies with 2002/24/EC. The drive assist system is limited to a maximum continuous power rating of 0,25kW (250W) and a maximum speed of 45kph (27.9 mph).

NOT INTENDED: This vehicle must only be operated roads that are legally open to vehicles of the class L1e. This bike is not for mountain biking use, jumping, or racing.

YOU MUST FOLLOW ALL LOCAL LAWS: It is your responsibility to identify and follow all local laws and regulations (including fitting your bike with additional equipment) necessary to comply with local laws. Ask your Cannondale Dealer for more information about operating an electrically assisted pedal bicycle in your area.

DO NOT MODIFY THIS BICYCLE/FORK IN ANY WAY FOR ANY REASON. Doing so can result in severe damage, faulty or dangerous operating conditions, or violation of local laws.

IMPORTANCE OF PRACTICE & RIDER TRAINING - Before you ride this bike, practice riding in a safe area free from hazards. Take time to learn to bike's controls and performance. Practice the controls and gain the experience necessary to avoid the many hazards you will encounter while riding.

DO NOT RIDE "HANDS-OFF - Keep your hands on the handlebar when riding the bike. If you remove your hands from the handlebar while riding, you can lose control of the bicycle and crash.

UNDERSTAND YOUR BIKE AND ITS INTENDED USE. USING YOUR BIKE THE WRONG WAY IS DANGEROUS.

Please read your Cannondale Bicycle Owner's Manual for more information about Intended Use and Conditions 1-5.

YOU CAN BE YOU SERIOUSLY INJURED, PARALYZED OR KILLED IF YOU IGNORE THESE WARNINGS. ALWAYS WEAR A SPECIFIC HELMET INTENDED FOR CYCLING WHILE RIDING THE SPEED E-BIKE. MAKEM SURE YOUR SPEED E-BIKE IS INSURED AND REGISTERED ACCORDING TO THE LOCAL LAWS.

CHILD SEATS AND TRAILERS CAN NOT BE USED AND ARE NOT ALLOWED TO BE USED WITH YOUR CANNONDALE CONTR0-E SPEED E-BIKE (L1e).

Read the Drive System Manufacturer's Instructions

WARNING

MANUFACTURER'S INSTRUCTIONS -In addition to this supplement, you must read and follow the manufacturer's instructions for all components of the drive assist system. These instructions contain correct operation, service and maintenance information. More information please visit: http://www.cannondale.com/manual_ebikes/.

LEFTY Rigid Front Wheel

WARNING

- **DO NOT CONTAMINATE BRAKE CALIPER, PADS, OR ROTOR WITH GREASE.**
- **DO NOT RIDE WITHOUT A PROPERLY MOUNTED, ADJUSTED, AND FUNCTIONING FRONT BRAKE SYSTEM.** The Lefty (disc/caliper) acts as an integral secondary wheel retention system. If the system is missing or improperly installed, or if the wheel hub axle bolt should loosen, the front wheel could slide off the spindle end.

When mounting IS compatible brake systems:
Follow brake manufacturer's instructions when mounting the brake caliper to the spindle brake bosses. Do not modify the fork in any way. **PLEASE ASK YOUR CANNONDALE DEALER FOR HELP WHEN INSTALLING COMPATIBLE FRONT BRAKE SYSTEMS.**

NOTICE

- **LOCATE BRAKE ROTOR BETWEEN THE PADS.** Replace shims that are in use, be sure the shims are positioned between the caliper (adapter if any) and inner face of the fork mounts, not under the head of the caliper bolts.
- **USE ONLY THE LEFTY 16mm CALIPER BOLTS TO MOUNT THE BRAKE.** Longer bolts can result in contact with the brake rotor causing severe damage. Check clearance between the bolt tips and rotor after remounting the caliper. Order replacement bolts - Cannondale p/n LEFTYBOLTS.

Rear Rack & Kickstand

WARNING

Do not sit on the bicycle with the kickstand down. Kickstand is not designed to support the weight of a person. Make sure kickstand is up before riding. The kickstand folds in automatically when bike is not leaned to the side. Make sure you park your bike on an appropriate surface.

Do not overload the rear rack. Make sure the cargo is secured properly.

RACK MAXIMUM WEIGHT LIMIT: 25Kg, 55lbs

YOU CAN BE YOU SERIOUSLY INJURED, PARALYZED OR KILLED IF YOU IGNORE THESE WARNINGS.

No Modification

WARNING

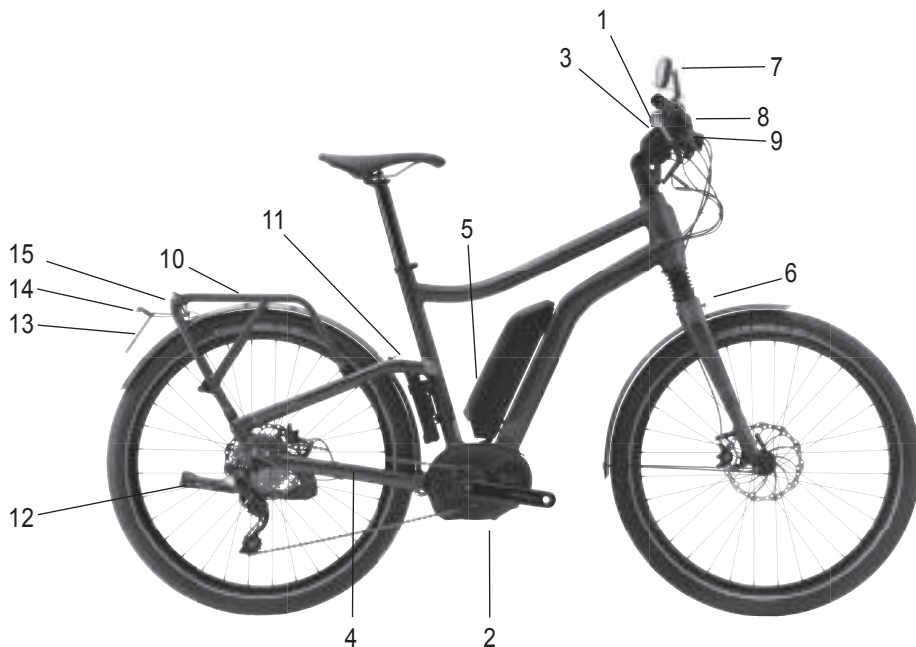
DO NOT ALTER, CHANGE, OR MODIFY THE BICYCLE OR THE DRIVE ASSIST SYSTEM. Dealers and owners MUST NOT change, alter, or modify in any way the original components of the bicycle or drive assist system. Specifically attempts to "hot-rod" or "improve" the speed of the bike are dangerous to the rider. Use only specified CANNONDALE and manufacturer drive assist service and replacement parts.

YOU CAN BE YOU SERIOUSLY INJURED, PARALYZED OR KILLED IF YOU IGNORE THESE WARNINGS.

PARTS OF THE E-SERIES

CONTRO-E SPEED

Headshok



- 1 Drive Assist Display
- 2 Drive motor
- 3 Drive Control
- 4 Sensor/Spoke magnet

- 5 Battery
- 6 HEADSHOK fork
- 7 Mirror
- 8 Bell

- 9 Headlamp
- 10 Rack
- 11 Folding Lock
- 12 Kickstand

- 13 Number plate holder
- 14 Number plate light
- 15 Brake Light

MAINTENANCE

The following table lists only supplemental maintenance items. Please consult your Cannondale Bicycle Owner's Manual for more information on basic bike maintenance. Consult with your Cannondale Dealer to create a complete maintenance program for your riding style, components, and conditions of use. Follow the maintenance recommendations given by the component manufacturer's for the various non-Cannondale parts of your bike.

CHECK THE FOLLOWING BEFORE EACH RIDE:

- Make sure the battery is fully charged and locked securely in position on the bicycle.
- Check tire pressure and wheel condition. Make sure wheel quick release are firmly closed.
- Check the drive chain condition. Make sure it is clean and well-lubricated.
- Check the bicycle front and rear lighting to make sure it works properly.
- Check the bicycle brakes, make sure they are working well.
- Inspect condition of electrical cables (i.e. Kinks free, no signs of abrasive wear)
- Test the drive assist system, make sure the drive system functions normally.
- Check the function of the brake light by pulling the front and the rear brake levers one after the other separately.
- Check the function of the number plate light and make sure it works properly.
- Make sure the number plate is clean and readable.
- **LEFTY RIGID** - Check the fork for signs of damage (bending, cracking, dents, or deep scratches).
- **IF YOU FIND ANY DAMAGE, DO NOT RIDE THE BIKE, CONTACT YOUR CANNONDALE DEALER.**

TO BE PERFORMED BY CANNONDALE DEALER :

Recommended after the first 150 km, bring your bike to your Cannondale Dealer for an initial check-up. It should include checks of the drive assist system, drive chain condition, proper shifting, accessories, wheels and tire condition, brakes, etc. This visit will help you establish a schedule for repeated visits appropriate for how and where you ride.

Every 1000 km, bring your bike in to your Cannondale Dealer for a regular detailed inspection, adjustment, and replacement of wear items across the entire bike. Electrically powered assist cycle (electric bikes) can wear out wheels, tires, drive chain, brakes, more quickly.



WARNING

ANY PART OF A POORLY MAINTAINED BIKE CAN BREAK OR MALFUNCTION LEADING TO AN ACCIDENT WHERE YOU CAN BE KILLED, SEVERELY INJURED OR PARALYZED. Please ask your Cannondale Dealer to help you develop a complete maintenance program, a program which includes a list of the parts on your bike for YOU to check regularly. Frequent checks are necessary to identify the problems that can lead to an accident.

Cleaning

When cleaning your bike, use a damp sponge or a soft brush with only a mild soap and water solution. Rinse the sponge often. Do not spray water.

NOTICE

Do not use a pressure washer or dry with compressed air. This will force contaminants into sealed areas, electrical connections/ components promoting corrosion, immediately damaging, or result in accelerated wear.

 **WARNING**

KEEP WATER AWAY FROM THE ELECTRICAL COMPONENTS.

MAKE SURE THE BIKE IS SECURED UPRIGHT AND CAN NOT FALL OVER ACCIDENTALLY WHILE YOU ARE CLEANING IT. Don't rely on the kickstand. Use a sturdy portable bicycle wheel stand to hold the bike upright.

Tightening Torques

Correct tightening torque for the fasteners (bolts, screws, nuts) on your bicycle is very important to your safety, the durability and performance of your bicycle. We urge you to have your Dealer correctly torque all fasteners using a torque wrench.

DESCRIPTION	Nm	In Lbs	Loctite™
KICKSTAND MOUNTING	7.0	62.0	
REAR RACK MOUNTING BOLTS	3 - 4	26.5 - 35.4	
STEM/HANDLEBAR CLAMP BOLTS	6.0	53.0	242 (blue)
DROPOUT MOUNTING BOLTS	15	133	
LEFTY CLAMP BOLTS	7-9	62-80	
LEFTY WHEEL AXLE BOLT	15	133	

If you decide to tighten fasteners yourself always use a good torque wrench!

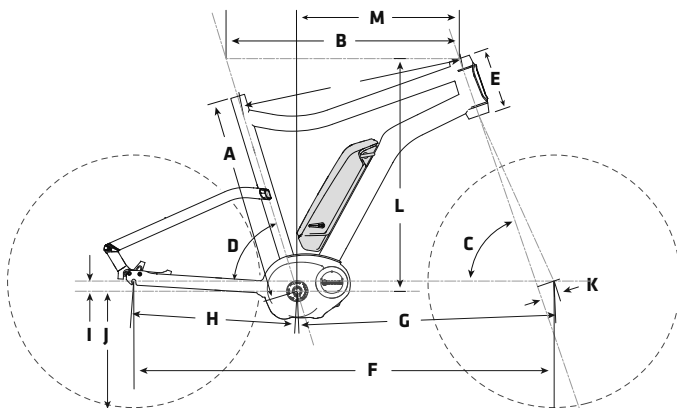
Drive Unit

NOTICE

Drive unit is maintenance-free and must only be serviced at an authorized service center. This will ensure the quality and safety of the driving unit. Never attempt to open, remove it from the frame, or work on it yourself. Other components of the eBike drive (e.g. drive chain, front chain ring, rear cassette, rear derailleur, crankarm) must be serviced by your Cannondale Dealer. Replacement parts must be identical to the original Cannondale specification for the bike. See **Specifications**. Failure to replace components with original specification can result in serious overload or other damage to the drive unit. Unauthorized opening or service of the drive unit will void the warranty. The drive system will not function without the computer unit attached to the base properly. If the computer disconnects from the base during operation, the drive system will shut off. If this happens you will have to stop the bike, turn the system off, re-attach the computer to the base, and then turn the system back on to resume. Remove the computer when not operating the bike to prevent theft or unauthorized use.

GEOMETRY

- A - Seat Tube Length
- B - Top Tube Horizontal
- C - Head Tube Angle
- D - Seat Tube Angle
- E - Head Tube Length
- F - Wheelbase
- G - Front Center
- H - Chain Stay Length
- I - Bottom Bracket Drop
- J - Bottom Bracket Height
- K - Fork Rake
- L - Stack
- M - Reach



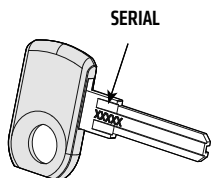
EN

MODEL	Size (mm)	Size												
		A	B	C	D	E	F	G	H	I	J	K	L	M
CONTR0-E SPEED HEADSHOK 26	S	460	578	71°	73°	160	1085	634	456	53	287.5	4,5	59.1	382
	M	510	598	71°	73°	160	1105	654	456	53	287.5	4,5	59.1	402
	L	560	628	71°	73°	160	1135	684	456	53	287.5	4,5	59.1	432

KEYS

Your E-Series bike comes with a main key and spare key. The keys are identified by the serial number **SERIAL**. Please record the key serial number for future use and key replacement. If your keys are ever lost or stolen, or you would like additional spares, please contact:

Replacement information by key manufacturer:



AXA

<http://www.axa-stenman.com>



www.abus.com



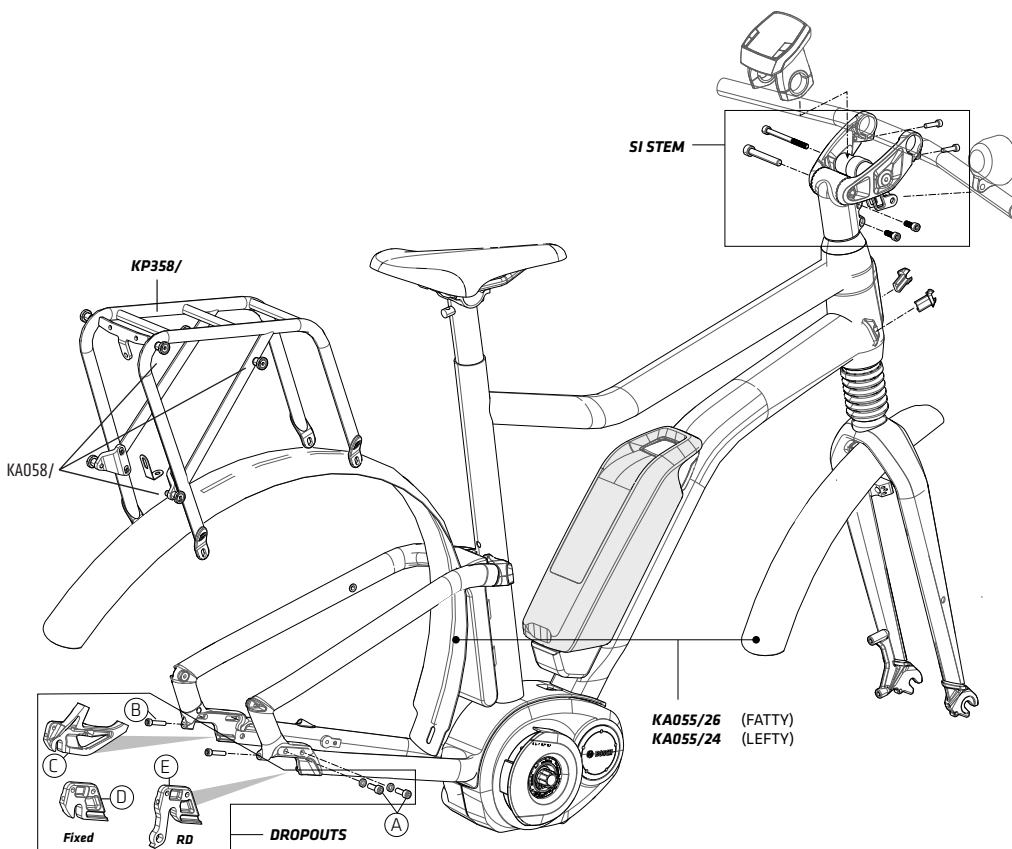
<http://www.trellock.de/web/en/services/schluesselservice/schluesselservice.php>

Record SERIAL here. _____

NOTICE

Don't ride with key in battery lock. Always remove the key from the lock after using it. Keys may be stolen or break off accidentally in the lock. Keep your spare key in a safe place.

REPLACEMENT PARTS



FRAME/RACK/KICKSTAND

KA056/	KICKSTAND CDALE SI BLK 40mm Mount Plate
KP358/	KIT RACK CONTRO BLK
KA058/	PLUGS, RACK ORTLIEB QL3

FORKS

HF15LARIG/24/BBQ	FORK 15 LEFTY AL RIGID CONTRO-E 24 BBQ
HF15LARIG/26/BLK	FORK 15 FATTY DL50-DISC 26 CONTRO-E BLK
HF15LARIG/24/BBQ	FORK 15 LEFTY AL RIGID CONTRO-E 24 BBQ

SI STEM

BIKE SIZE	S	M	L
HEADSHOK - 26" stem length:	KA057/S 100mm	KA057/ 135mm	KA057/ 135mm
LEFTY RIGID - 24" stem length:		KA063/S 100mm	KA063/S 135mm

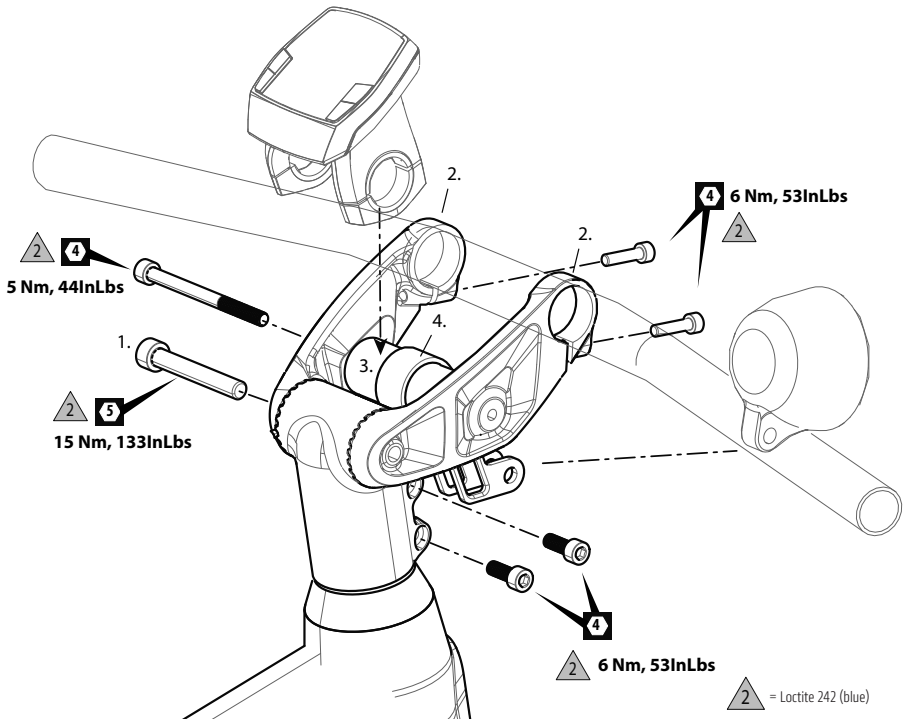
DROPOUT KITS

KP356/	DROPOUT KIT (Fixed)
KP357/	DROPOUT KIT (Rear Derailleur)
DROUPOUT KIT (fixed) contains A, B, C, D	
DROUPOUT KIT (rear derailleur) contains A, B, C, E	

FENDER

KP358/26	FENDER SET CONTRO-E 26" - HEADSHOK
KP358/24	FENDER SET CONTRO-E 24" - LEFTY RIGID

SI CONSOLE



EN

Handlebar Adjustment

The handlebar height is adjusted by loosening the pivot bolt (1) and moving the arms (2) handlebar up or down to the desired position. Re-tighten the pivot bolt to the specified torque with a torque wrench following adjustment. The adjustment bolt is treated with a thread locking agent, but it will require periodic re-application of Loctite #242 (blue), especially if frequent adjustments are made.

Head Lamp & Display Mounting

The drive assist system display and head lamp and reflector brackets are to be mounted onto the center support (3). This support will rotate so that the mounted parts can be positioned correctly. The head lamp mounting bracket (4) can also be rotated if necessary.

The maximum adjustment range is 65 degrees.

⚠ WARNING

ADJUSTMENTS SHOULD ONLY BE PERFORMED BY A QUALIFIED BICYCLE MECHANIC.



