

Gemini DH

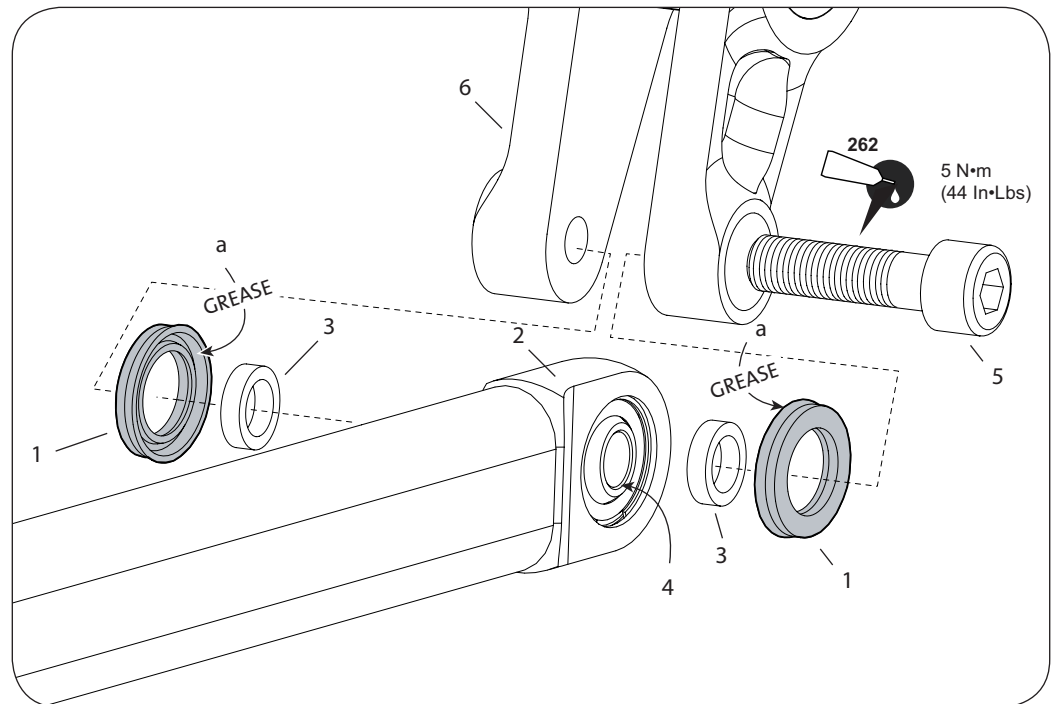
05030A.PDF

Brake Link Seals

Adding Brake Link Seals

The addition of U-Cup seals (1) to the rear Gemini DH brake link arm assembly can reduce noise caused by vibration (rattle) and can extend bearing (4) life.

To install, remove the bolt (5) and slide the link assembly down out from the carrier (6). Wipe the bearing (4) clean and cover it with some bearing grease to help prevent water intrusion. Position the small spacers (3) against the bearing followed by the seals with the open side (a) facing the bearing. Reinsert the link end with seals between the carrier and tighten the bolt.



CANNONDALE USA (CUSA)
Cannondale Bicycle Corporation
172 Friendship Road
Bedford, Pennsylvania 15522
(Voice): 1-800-BIKEUSA
(Fax): 814-623-6173
custserv@cannondale.com
URL: <http://www.cannondale.com>

CANNONDALE AUSTRALIA (CA)
Unit 6, 4 Prosperity Parade
Warriewood N.S.W 2102
Australia
Phone(02)9979 5851
Fax(02)9979 5688
cannondaleaustralia@cannondale.com

CANNONDALE JAPAN (CJ)
12-5 Harayamadai
5-cho Sakai City
Osaka, Japan 590-0132
(Voice): 011.81.722.99.9399
(Fax): 0722-93-6166
cjcustserv@cannondale.com

CANNONDALE EUROPE (CE)
mail: Postbus 5100
visits: Hanzepoort 27
7570 GC Oldenzaal
Netherlands
(Voice): +31 541 573580
(Fax): 31-5415-14240
servicedeskeurope@cannondale.com