

Tesoro Neo X Speed

Owner's Manual Supplement

 **WARNING**

**READ THIS SUPPLEMENT AND YOUR
CANNONDALE BICYCLE OWNER'S MANUAL.**

Both contain important safety information. Keep both for future reference.

Safety Messages

In this supplement, particularly important information is presented in the following ways:

WARNING

Indicates a hazardous situation which, if not avoided, may result in death or serious injury.

NOTICE

Indicates special precautions that must be taken to avoid damage.

The following symbols are used in this manual:

| Symbol | Name | Description |
|---|---------------------------------------|--|
|  | NGLI-2 synthetic grease | Apply NGLI-2 synthetic grease. |
|  | Medium-strength removable thread lock | Apply Loctite® 242 (blue) or equivalent. |

Cannondale Supplements

This manual is a “supplement” to your [Cannondale Bicycle Owner’s Manual](#).

This supplement provides additional and important model specific safety, maintenance, and technical information. It may be one of several important manuals/supplements for your bike; obtain and read all of them.

Please contact your Authorized Cannondale Dealer immediately if you need a manual or supplement, or have a question about your bike. You may also contact us using the appropriate country/region/location information.

You can download Adobe Acrobat PDF versions of any manual/supplement from our website: <http://www.cannondale.com>.

Contacting Cannondale

CSG Europe (Woudenberg)

Cycling Sports Group Europe B.V.

Geeresteinselaan 57

3931JB Woudenberg

The Netherlands

International Distributors

Consult our website to identify the appropriate Cannondale Dealer for your region.

CONTENTS

| | |
|------------------------------------|--------------|
| Identification | 4 |
| Safety Information | 5-10 |
| Key | 11 |
| Technical Information | 12-23 |
| Replacement Parts | 24-27 |
| E-Bike Maintenance | 28-30 |
| Notes | 31-32 |

Your Cannondale Dealer

To make sure your bike is serviced and maintained correctly, and that you protect applicable warranties, please coordinate all service and maintenance through your Authorized Cannondale Dealer.

NOTICE

Unauthorized service, maintenance, or repair parts can result in serious damage and void your warranty.

Drive System

WARNING

MANUFACTURER’S INSTRUCTIONS - In addition to this supplement, you must read and follow the manufacturer’s instructions for all components of the drive-assist system:

| | |
|-----------------------------|----------------|
| Drive Unit | Battery |
| Display/Control Unit | Charger |

Manufacturers’ instructions contain important operations, service and maintenance information.

IDENTIFICATION

Parts of Your E-Bike



Actual bike appearance will differ.

Identification

- | | | | |
|------------------|---------------------------------------|-------------------|---|
| 1. Drive display | 7. Horn | 12. Seatpost | 18. VIN - Vehicle Identification Number |
| 2. Drive unit | 8. Rear Light (w/ plate illumination) | 13. Seat clamp | 19. Stem |
| 3. Battery | 9. Plate mount | 14. Kickstand | |
| 4. Charge port | 10. Rear rack | 15. Rear cassette | |
| 5. Key | 11. Saddle | 16. Serial number | |
| 6. Headlamp | | 17. Speed sensor | |

SPEED PEDELECS - Bicycle model with an assisted maximum speed greater than 25 kph, are classed as Speed pedelec in Europe. Speed pedelecs are legally a moped (Kleinkraftrad), classified as L1e-B. Usage requires a helmet, a driving license and insurance plate.

Record VIN here:

SAFETY INFORMATION

Intended Use



The intended use of all models is
ASTM CONDITION 2,
General Purpose Riding.

What is an E-Bike?

Electric bikes, also known as “E-Bikes,” are bicycles equipped with an electric pedal-assist drive system. E-Bikes share components common with pedal-only bikes.

What is a Drive System?

The drive-assist system consists of a drive unit, a battery, a computer control, and various electronic components (harness wires, sensors, and switches). There are many different drive-assist systems for differing uses and bike types. Likewise there are various drive-assist system manufacturers (Shimano, BOSCH, Bafang, Yamaha, etc.)

How does the Drive System work?

It is important to know that when the drive-assist system is turned ON, the drive unit engages to provide power only while you are pedaling.

The amount of power provided by the drive unit depends on your pedaling force and on the assistance mode/level you set with the handlebar control unit. At anytime, if you stop pedaling, the drive-assist will dis-engage.

In all modes/levels, the drive-assist system power reduces progressively and cuts off as the bike reaches the maximum allowable speed. The drive-assist re-engages when speed drops below the maximum allowable speed as long as the pedals are turning.

Whenever the drive-assist system is turned OFF, you can pedal the bike normally. The drive system will not engage.

WARNING

Understand your bike, its drive-assist system, and the intended use of both. Using your bike the wrong way is dangerous.

Please read your Cannondale Bicycle Owner’s Manual for more information about Intended Use and Conditions 1-5.

Servicing

WARNING

This supplement may include procedures beyond the scope of general mechanical aptitude.

Special tools, skills, and knowledge may be required. Improper mechanical work increases the risk of an accident. Any bicycle accident has risk of serious injury, paralysis, or death.

To minimize risk we strongly recommend that owners always have mechanical work done by an Authorized Cannondale Dealer.

Compliance/Regulation



WARNING

YOU MUST OBEY ALL LOCAL LAWS & REGULATORY REQUIREMENTS - It is your responsibility to identify and to follow all local laws and regulations necessary for legal compliance. Compliance with local regulations is critical to the safety of the rider and of others where the bike is used.

Here are some important specifications related to compliance with local laws:

SPEED PEDELECS - Bicycle model with an assisted maximum speed greater than 25 kph, are classed as Speed pedelec in Europe. Speed pedelecs are legally a moped (Kleinkraftrad), classified as L1e-B. Usage requires a helmet, a driving license and insurance plate.

This bicycle is an s-pedelec and has been type approved with the originally equipped components. Removing components or replacing components with non-original equipment requires prior permission from the local regulatory authority to not violate the type approval.

The following components require “like-for-like” replacement:

- Frame
- Fork
- Motor unit
- Battery
- Rims
- Tires
- Braking system
- Front light
- Rear light
- Number plate holder
- Pedals
- Kickstand
- Stem
- Handlebar
- Seatpost

OBSERVE MINIMUM OPERATOR AGE - Follow any national, state, or local laws for any minimum age restrictions for the operator of the E-Bike.

Ask your local Authorized Cannondale Dealer for more information about operating an electrically assisted pedal bicycle in your area.

Rear Rack



WARNING

Do not overload a rear rack. Make sure the cargo is secured properly. Observe the rack maximum weight limit found in the “Specifications” section of this supplement. Improperly installing a rack, altering your bike to install a rack, or over-loading a a bike rack can create dangerous riding conditions.

Operation

WARNING

Always wear an approved bicycle helmet and all other protective gear (e.g., gloves, pads, and cycling shoes).

Importance of practice & rider training - before you ride this bike, practice riding in a safe area free from hazards. Take time to learn the bike's controls and performance. Practice the controls and to gain the experience necessary to avoid the many hazards you will encounter while riding.

Do not ride "hands-off" - Keep your hands on the handlebars when riding the bike. If you remove your hands from the handlebar while riding, you can lose control of the bicycle and crash.

Changing the assistance level while riding: Changing the drive-assistance level while riding will increase or decrease the acceleration of the bike. You should anticipate this change in speed and react appropriately depending on the riding conditions such as on slippery trails, tight turns, or unstable or uneven surfaces. Set assistance level to "eco" (lowest assist) or to "off" before descending technical trails, (e.g., tight downhill switchbacks).

When not riding: Turn the drive system off to prevent unauthorized use.

Do not ride the e-bike without the battery. Make sure the battery is fully charged before every ride to help ensure adequate battery power for necessary lighting and for the drive system.

Do not remove any lighting or reflectors and do not ride if they do not work.

Do not allow children to operate or to come into contact with the e-bike or its parts.

Only turn the drive system on when you are seated ready to ride.

Accidental activation: Always disconnect the battery from the bike before working on the bicycle. If you transport the bike by car or by airplane, obey local regulations regarding transporting a bicycle with a drive system battery. Accidental activation of the bicycle drive system can result in serious injury.

continued next page

continued from previous page...

Wired system control: If the drive system control device is detached from the mount or if the cables are disconnected or damaged, the drive system will automatically shut off. If this happens, you will have to stop the bike, turn the system off, re-attach the computer to the base, and then turn the system back on to resume operation.

Wireless system control: In wireless control systems, the operation of the drive system is controlled using radio frequencies without physical attachment. Therefore, ON/OFF activation is determined by software programming. Please consult the manufacturer's instructions for information on preventing accidental activation or on restarting the drive system in the event of a recovery from a drive system fault.

Your insurance policies - Your insurance policies (e.g., liability, property, and injury) may not provide coverage for accidents involving the use of this bicycle. To determine if coverage is provided, you should contact your insurance company or agent. Also, make sure your speed e-bike is insured and registered according to the local laws.

Ride sensibly and safely around others - the application of power by means of the electric motor assist means that riders can reach high speed. Riding faster increases the risks of serious accidents.

Watch out for other vehicles, cyclists, pedestrians, and animals where you ride. Always operate under control and at a safe speed. Others may not be aware of you. It is your responsibility to anticipate and to react to avoid accidents.

E-bikes are heavier than ordinary bikes - always park the bike in a suitable safe area away from children, cars or animals that may come into contact with it. Park the bike so that it cannot fall over and possibly result in injuries.

Do not ride into or attempt to ride through water or to submerge any part of the bike. If you ride through water you can lose control of the bike or the drive-assist system can become disabled or damage.

You can be severely injured, paralyzed, or killed in an accident if you ignore these warnings.

Batteries & Chargers

WARNING

REPLACEMENT - Only use the battery pack and charger indicated in the “Specifications” section of this supplement. Do not use other batteries or chargers. Do not use the charger to charge other batteries.

PREVENT DAMAGE - Do not drop the battery or charger. Do not open, disassemble, or modify the battery or charger. There are no user-serviceable parts inside.

Keep the battery out of intense sunlight and away from heat. Excessive heat will damage the battery.

Keep battery away from paper clips, coins, keys, nails, screws, or other small metal items to prevent shorting exposed battery contacts. Shorting battery contacts can cause severe burns, fire, or an explosion.

STORAGE & TRANSPORTATION - When the battery is not in use in the bicycle, its transportation is subject to hazardous materials regulation. Special packaging and labeling requirements may exist. Contact local authorities for specific requirements. Never transport a damaged battery. Insulate battery contacts before packaging. Package the battery inside a shipping container to prevent damage. The battery must be removed before flying and may be subject to special handling by the air carrier.

CHARGING - Bring the battery and charger indoors and allow to reach room temperature before charging. Make sure charger and A/C outlet are the same voltage.

Locate both charger and battery indoors in a clean, dry area with good ventilation to charge. Make sure the area is free from combustibles to avoid fire from sparks or from over-heating. Keep charger ventilation openings unobstructed. Do not cover the charger or the battery.

Disconnect the battery from the charger unit when fully charged. Do not leave a fully-charged battery connected to the charger. Unplug the charger from the wall outlet when not in use.

Maintain the battery and the charger as directed by the manufacturer’s instructions.

DISPOSAL - Battery pack and charger contain regulated materials and must be disposed/discarded in accordance with national and/or with local laws. Do not discard the battery/charger into fire, into water, or into ordinary household waste/garbage. Instead, take to a waste facility/recycler.

FAILURE TO OBSERVE THESE WARNINGS CAN RESULT IN ELECTRICAL FIRES, EXPLOSIONS, SEVERE BURNS, OR ELECTROCUTION.

No Modification

 **WARNING****DO NOT MODIFY THIS BICYCLE/DRIVE SYSTEM IN ANY WAY FOR ANY REASON.**

Doing so can result in severe damage, in faulty or in dangerous operating conditions, or in violation of local laws.

Dealers and Owners **MUST NOT** change, alter, or modify in any way the original components of the bicycle or drive-assist system (e.g., the specified sizing of the gear ratios, i.e., the front chainrings and rear cogs).

Attempts to “hot-rod” or to “improve” the speed of the bike are dangerous to the rider. Use only specified Cannondale and/or manufacturer drive-assist service and replacement parts.

Trailers or Child Carrier or Child Seats

 **WARNING****DO NOT ATTACH A TRAILER, CHILD CARRIER OR CHILD SEAT TO THIS BICYCLE.**

Attachment of a trailer or child seat to this bicycle can result in a serious accident leading to serious injury or death.

Commuting

 **WARNING**

EQUIPMENT - Any bicycle, including an E-Bike, must be properly equipped for commuting including any legally-required lights, signals, and registrations. Ask your Authorized Cannondale Retailer if commuting is within the scope of your bike’s intended use and if your bike is properly equipped for commuting.

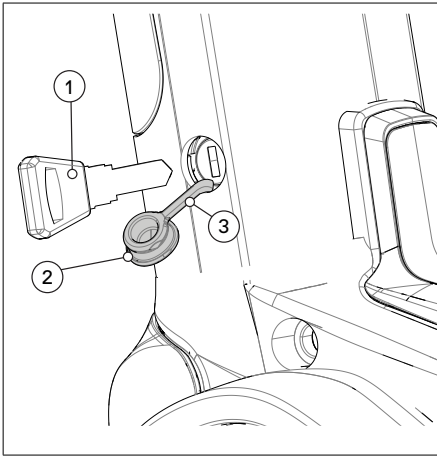
DANGERS - Operating an E-bike as a commuting vehicle is no less dangerous than operating an ordinary pedal bike or automobile. E-Bikes are certainly not designed to protect you in a crash. Do not assume the bike or its drive capability will protect you or keep you from being involved in a serious accident.

NIGHT RIDING- Riding at night on an E-Bike or on a pedal-only bike is very hazardous.

Read the topic “Riding at Night” in your Cannondale Bicycle Owner’s Manual for more information on the many hazards of riding at night.

You must operate with a very high degree of awareness and precaution to only reduce the risk of death or serious injury.

KEY



Please Note:

After multiple rides and bike-washes, the battery lock can become dry and difficult to use. To maintain, whenever you lubricate your bike chain, place a few drops of chain oil on the key, insert the key and operate the lock, then remove and wipe the key clean.

Record YOUR Key Serial Number here:

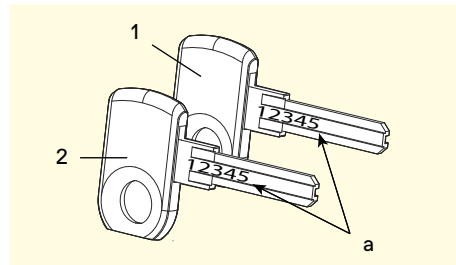
Using the Key

The key (1) is used to secure the internal battery. See “Powertube Battery.”

To access the key hole, use your finger to lift the tethered key cap (1) out of the frame hole.

Please record the key serial number for future use and key replacement.

If your keys are ever lost or stolen, or if you would like additional spares, please contact the key manufacturer indicated in the “Specifications” in this manual.



- 1. Main Key
- 2. Spare Key
- a. Serial Number

NOTICE

Don't ride with the key in the battery lock.

Always remove the key from the lock after using it. Keys may be stolen or break off accidentally in the lock. Keep your spare key in a safe place.

TECHNICAL INFORMATION

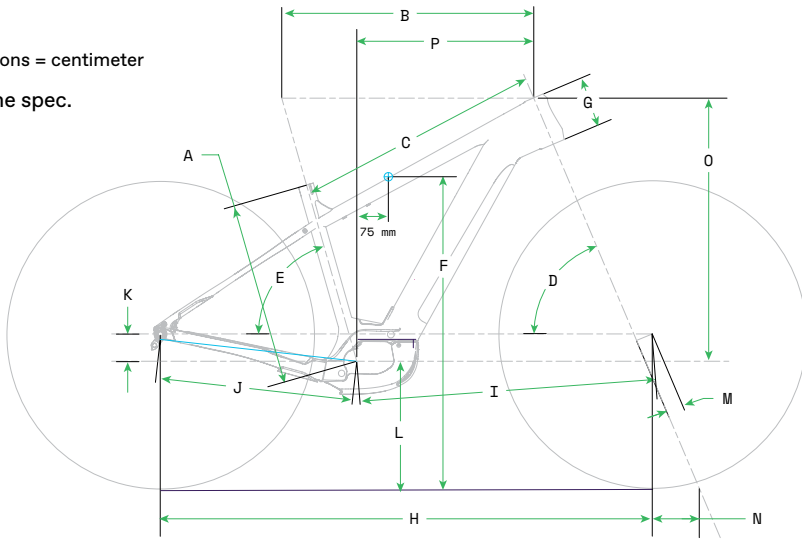
Specifications

| Item | Specification |
|--|---|
| Drive System | Bosch Performance Line Speed |
| Battery | Bosch PowerTube 625Wh |
| Drive-Assist Owner's Manual | https://www.bosch-ebike.com/ |
| Head Tube | UPR: 1-1/8 in LWR: 1-1/2 in |
| Headset | Integrated 1-1/8 in - 1-1/2 in |
| Bottom Bracket: Type/Width | Bosch Drive Unit |
| Front Derailleur | N/A |
| Seat Post: Dia./Binder | 31.6 mm / 36.4 mm |
| ▲ Min. Frame Seat Post Insert | 75 mm |
| Max. Frame Seat post Insert Depth | S-215mm, M-240 mm, L & XL - 323 mm |
| Max. Fork Length (axle to crown) | 510 mm |
| Max. Water Bottle Mounting Bolt Length | 12 mm |
| Max. Rear Rack Weight Limit | See rack markings. |
| Tire Size x Max. Tire Width | Big Ben Plus Etrto 55-622 (28 X 2.15 Zoll) |
| Brakes: Mount Type / Min./Max. Rotor Dia. | Post Mount / 180 mm/203 mm |
| Axles: Type/Length | RR: Maxle TA/148×12 mm, 188 mm Overall Length FR: Maxle TA/110×15, 148 mm Overall Length |
| Intended Use | ASTM Condition 2, General Purpose Riding |
| ▲ Max. Weight Limit: Total (Rider+All Equipment) | 305 lbs/ 138 kg |

Geometry

Dimensions = centimeter

* = same spec.



| Item | Frame Size | S | M | L | XL |
|------|---------------------------|-------|-------|-------|-------|
| | Wheel Size | 29 | * | * | * |
| A | Seat Tube Length | 40 | 43.5 | 47 | 50 |
| B | Top Tube Horizontal | 58.4 | 59.9 | 63.2 | 66.5 |
| C | Top Tube Actual | 56.9 | 57.8 | 60.8 | 63.9 |
| D | Head Tube Angle | 67.0° | * | * | * |
| E | Seat Tube Angle Effective | 74.0° | * | * | * |
| F | Standover | 75 | 75 | 75.8 | 75.6 |
| G | Head Tube Length | 12 | 12 | 13 | 14 |
| H | Wheelbase | 116.3 | 117.8 | 121.3 | 124.6 |
| I | Front Center | 70.1 | 71.6 | 75 | 78.4 |
| J | Chain Stay Length | 47 | * | * | * |
| K | Bottom Bracket Drop | 6.5 | * | * | * |
| L | Bottom Bracket Height | 31.5 | * | * | * |
| M | Fork Rake | 5.1 | * | * | * |
| N | Trail | 10.6 | * | * | * |
| O | Stack | 62.5 | 62.5 | 63.4 | 64.3 |
| P | Reach | 40.5 | 42 | 45 | 48 |

Horn & Headlamp

The horn and headlamp are activated by the drive system power. Both are required. Replace them if damaged or missing. Adjust the headlamp for best forward projection without raising too high to impair approaching vehicles. [See SUPERNOVA-lights.com](http://SUPERNOVA-lights.com) for manufacturer's instructions.

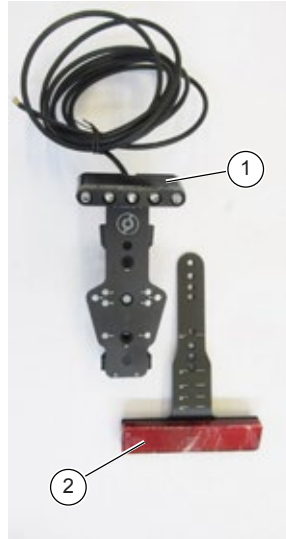
Identification

1. Headlamp
2. Horn
3. Horn button
4. Mounting bracket



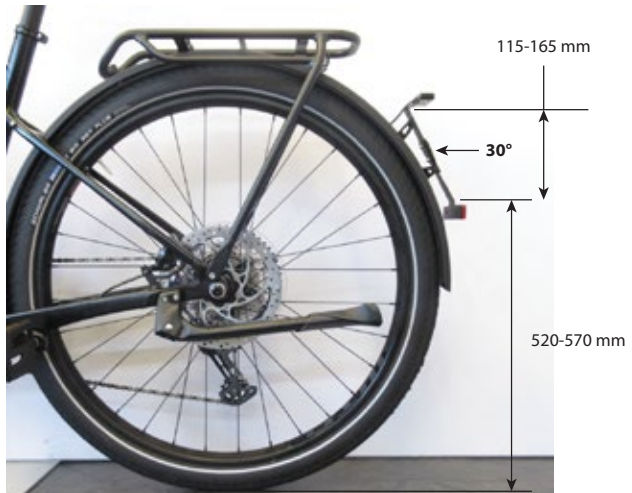
Rear Light & Reflector

The rear light is activated by the drive system power. Both the light and reflector are required. Replace them if damaged or missing. [See SUPERNOVA-lights.com for manufacturer's instructions.](http://See%20SUPERNOVA-lights.com%20for%20manufacturer's%20instructions.)



Identification

1. rear light (w/ plate illumination)
2. rear reflector
3. number plate mount



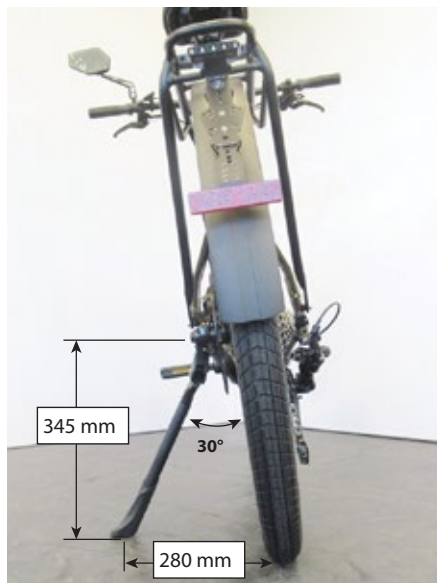
Side Stand

WARNING

Do not sit on the bicycle with the stand down. Kickstand is not designed to support the weight of a person.

Make sure kickstand is up before riding.

To prevent toppling over, park your bike on a level surface; lower the stand.



Rear View Mirror

The mirror pane can be tilted on the handlebar arm, so the seated rider has a view of rear objects. Do not remove it. Replace it if damaged. It is required.



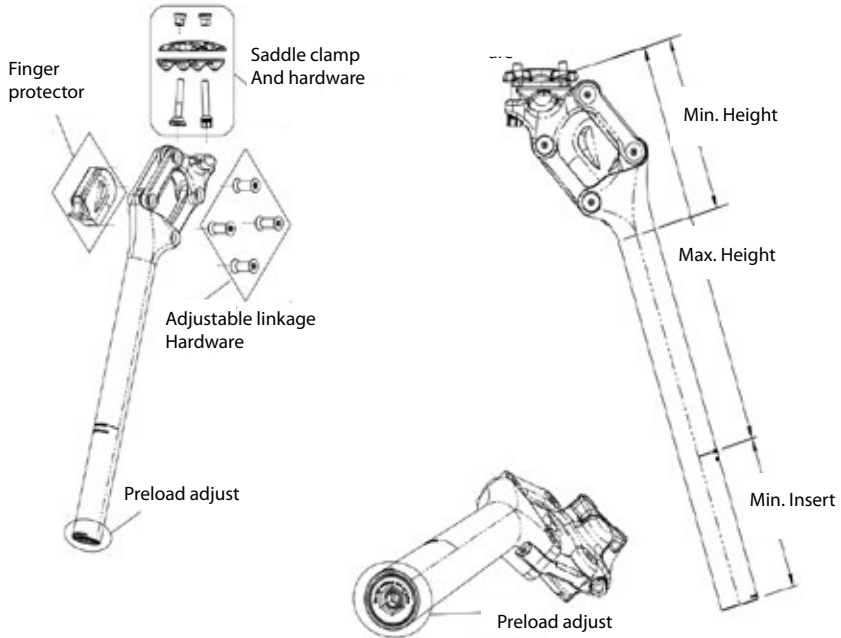
Mounting bracket with M5 × 18mm button head bolt. Torque = 2-2.5 Nm



If mirror is loosened after usage you can tighten it again. Maximum torque = 0.8 Nm

Seat Post

See www.postmoderne.com for manufacturer's instructions.



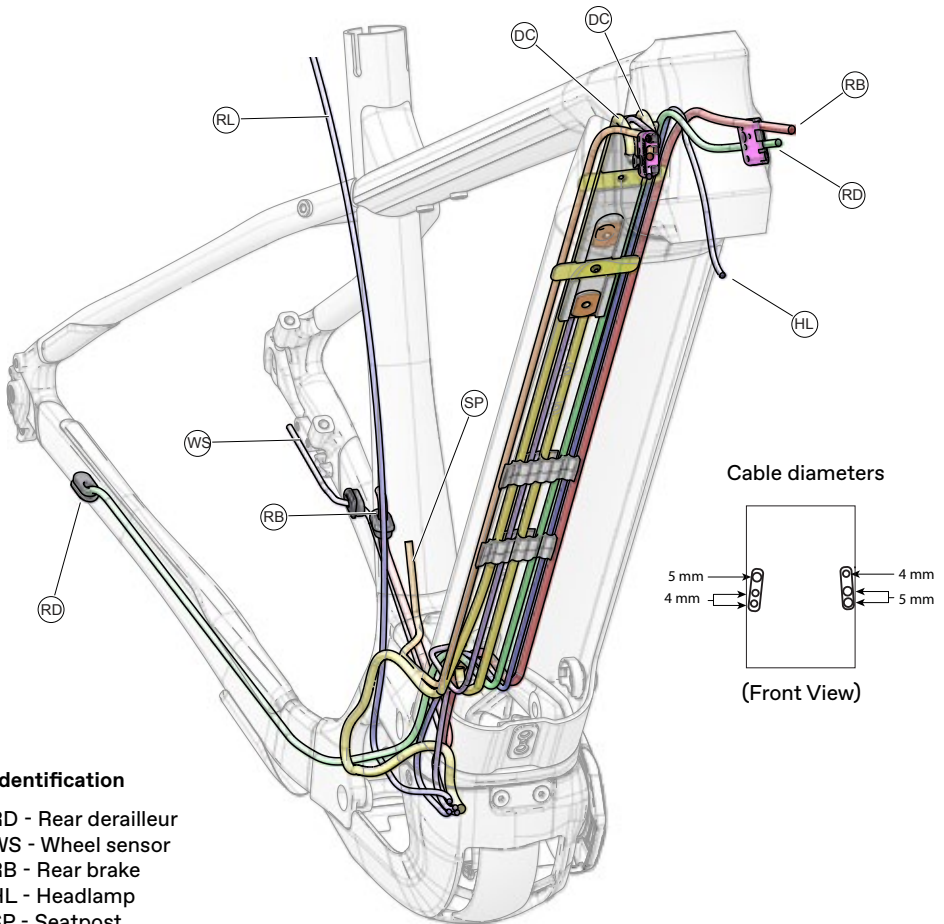
Model No. - PM-705N

| | | |
|--|---------------------------------|-------|
| Seatpost nominal length: | 350mm | 400mm |
| Seatpost minimum frame insertion: | 100 mm | |
| Seatpost minimum height, at zero travel: | 113mm | |
| Seatpost maximum height, at zero travel: | 266mm | 316mm |
| Weight: (approximate) | 585g | 620g |
| Seatpost travel: | 22mm vertical + 14mm horizontal | |
| Spring Type: | Coil steel compression spring | |
| Spring Adjustment: | Preload | |

Spring options:

| Spring Rate (Stiffness) | Spring Identification Color | Total Rider Weight |
|----------------------------|--------------------------------|-----------------------|
| Normal | Champagne | <70kg |
| Firm | Silver | 70-85kg |
| Extra Firm | Black | >85kg |

Cable Routing Overview

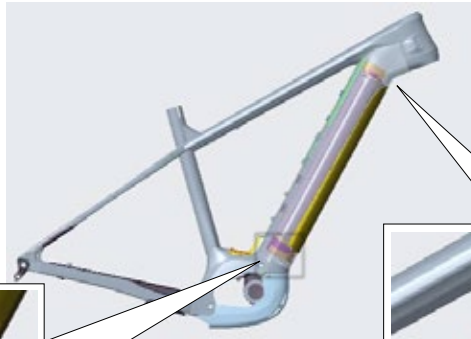


Identification

- RD - Rear derailleur
- WS - Wheel sensor
- RB - Rear brake
- HL - Headlamp
- SP - Seatpost
- RL - Rear light
- DC - Drive system cable

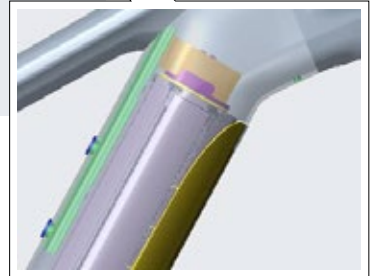
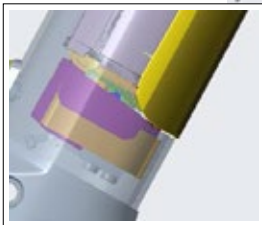
Please Note:

Do not attempt to work on the cable routing yourself. Due to the complex nature of the parts and the level of disassembly required to gain access, have any repairs or replacements of the battery, cables or hose parts identified performed by an authorized Cannondale e-bike service center.



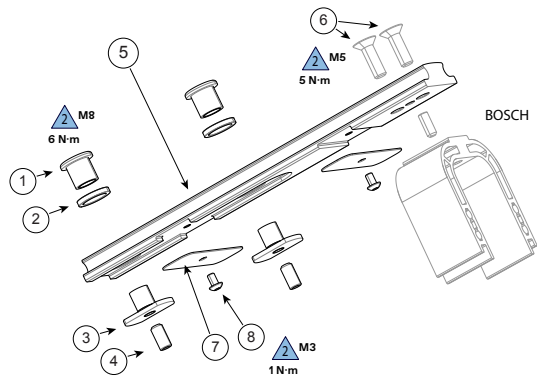
Upper Downtube:

BOSCH bracket mounted with RAIL on top side of downtube.



Lower Downtube:

BOSCH bracket mounted with BOSCH washer on bottom side of downtube (not shown), use standard BOSCH method.



Identification

1. Bolt (2X)
2. Washer, M5 (2X)
3. T-Nut (2X)
4. Set Screw (2X)
5. Rail
6. Bolt (2X)
7. Cable Guide Plate (2X)
8. Plate Screw (2X)

NOTICE

Item (2) use only when needed to prevent bottom out of bolts (1)
Install set screw (4) after installation of bolts (1) and (3) to prevent exterior access of bolt (1). Thread in to prevent exterior access to bolt (1) head.

Stem

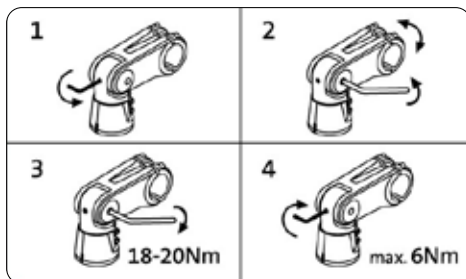
Top View



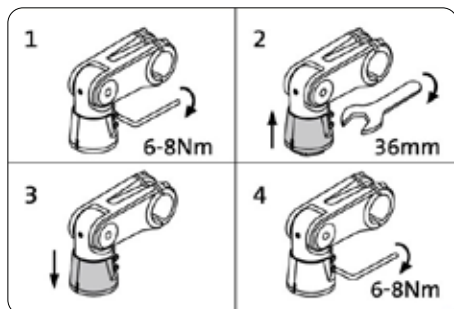
Side View



Angle Adjustment



Headset Adjustment



WARNING

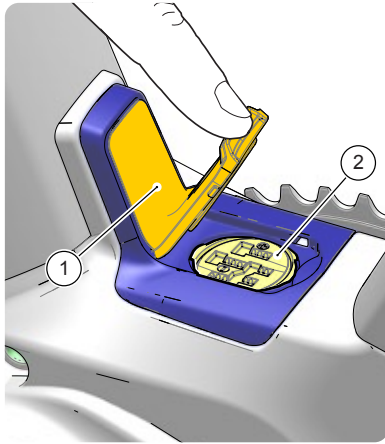
This page provides sequential steps and torque values for the adjustment indicated.

The adjustments should be performed by a professional bike mechanic. Incorrect adjustment can lead to an accident resulting in serious injury or death.

Read more about bicycle stems in your Cannondale Bicycle Owner's Manual.

Battery Charging Port

The battery charging port is located on top of the bottom bracket area. The charging port enables the internal battery to be charged while it remains installed in the bicycle.



To connect the charger cable to the port connector:

1. Place the bike and charger in a secure area where both will remain undisturbed while the battery is charging.
2. Lift up the battery port cover (1).
3. Attach the specified charging cable to the charge socket (2).
4. When charged, disconnect charger cable from the charge socket and replace cover. Make sure cover is seated fully into the frame opening.
5. Disconnect the charger from its source of power.

WARNING

Follow the drive system manufacturer's instructions for charging and handling of the battery.

Incorrect charging or handling can result in a fire or in an explosion, resulting in serious injury or death.

Do not insert anything other than the specified charging connector into the charging socket.

Powertube Battery

The drive system battery (1) is housed within the bicycle downtube.

The battery can be charged via the charge port (9) or removed for charging.

To remove the battery:

1. Secure the bike upright to prevent it from falling over.
2. Make sure the bike drive system is OFF.
3. Lift out the key cover (3) from the frame and insert the key (4) into the key slot.
5. Turn and hold the key counter-clockwise to permit the release of the battery.
6. Press in on the battery release tab (6) located on the bottom of the battery.
7. Once pressed, the battery will be allowed to tilt out from the upper battery connector mount (8 ,10).

To install the battery:

1. Secure the bike upright to prevent it from falling over.
2. Insert the top of the battery so that the battery socket (9) engages with the hook (8) and the connector (10).
3. Press in the lower part of the battery so it engages with the latch (5).
3. Turn the key to open the latch, press in the lower portion of the battery until the battery is fully engaged with the latch and turn the key back to lock-in the battery.

4. Remove the key.

NOTICE

Do not ride the bike without the battery cover installed. Dirt, water and other contaminants can enter frame and/or damage the battery.

WARNING

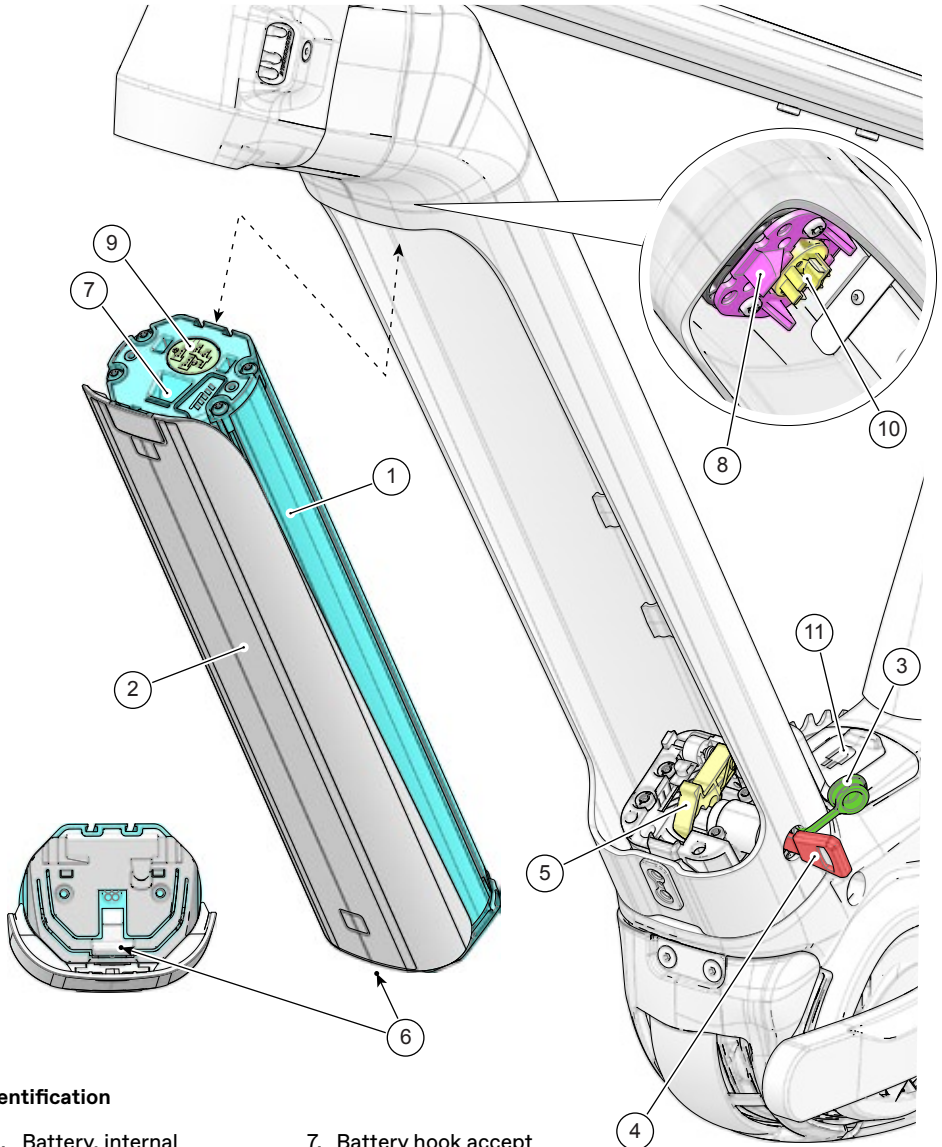
Periodically check to make sure the battery is securely mounted inside the frame.

Check the battery after any fall or impact. Check for loose or damaged parts.

Use only the specified battery. Do not modify the battery or other parts.

If you take the battery out, replace and secure the battery cover on the frame.

If damage is found, do not ride the bike. Have any damaged part replaced with a new one. Contact your Cannondale Dealer.



Identification

- | | |
|-----------------------------|-----------------------------|
| 1. Battery, internal | 7. Battery hook accept |
| 2. Battery cover (attached) | 8. Frame battery hook |
| 3. Key cover | 9. Battery charge connector |
| 4. Key | 10. Frame connector |
| 5. Latch | 11. Charge port |
| 6. Battery Release Tab | |

Battery Cover

The battery cover is intended to remain in-place on the battery at all times. It is only necessary to slide off the cover if the cover or battery becomes damaged. The cover can be transferred to another battery to be used when riding.

To remove the cover:

1. Remove the battery/cover from the frame. See Battery, Remove.
2. Lift the small latch.
3. Slide cover rearward.
4. Disconnect the cover from the battery.

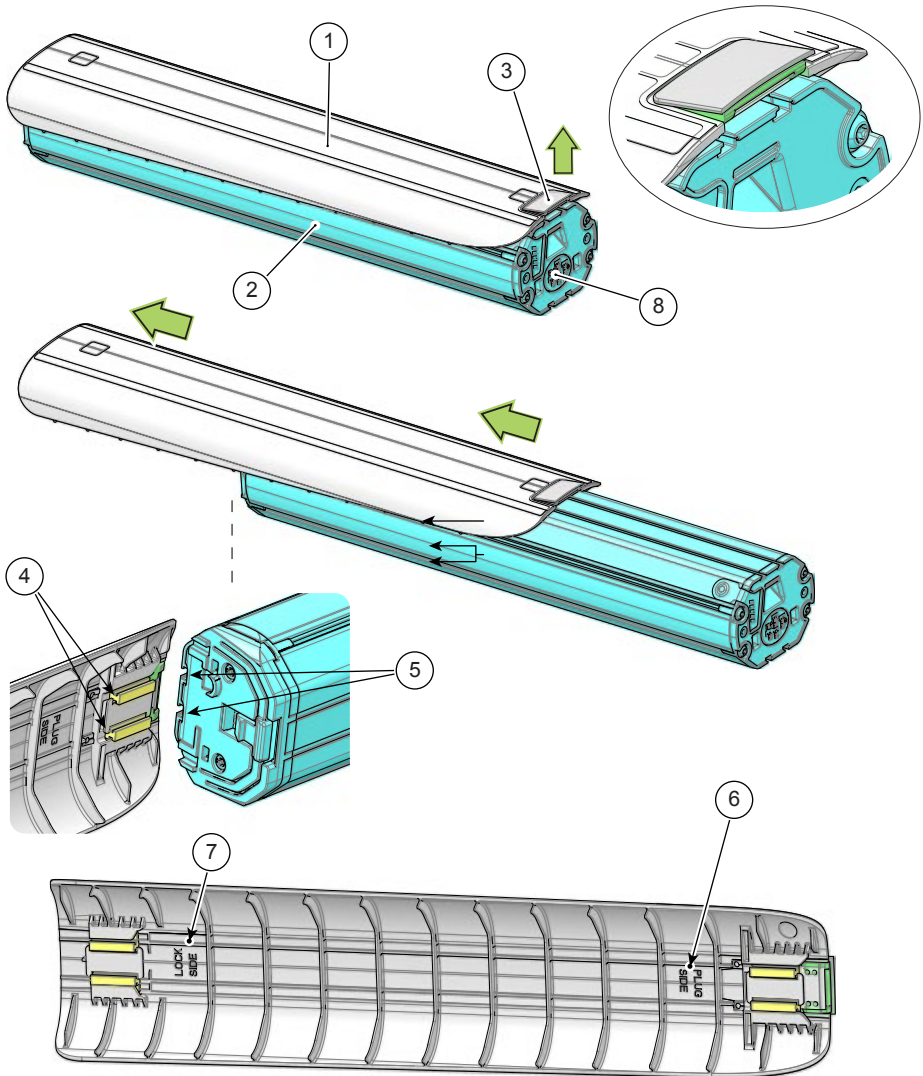
To install the cover onto battery:

1. Align the PLUG SIDE cover rail and with the slots at battery end opposite the charge port .
2. Slide cover straight onto battery until slowly. As the cover slides forward be sure to align the LOCK SIDE cover rails at the back.
3. Slide the cover forward until the small latch drops into place and lowers.
4. Check to make sure the cover is latched correctly before installing the battery back into the frame.

NOTICE

Do not ride the bike without the battery cover secured on the battery. Keep the cover clean. Wipe with a dry towel only. Do not use lubricants or solvents. Do not force a cover onto the battery. If it will not slide on, there is a problem that must be corrected.

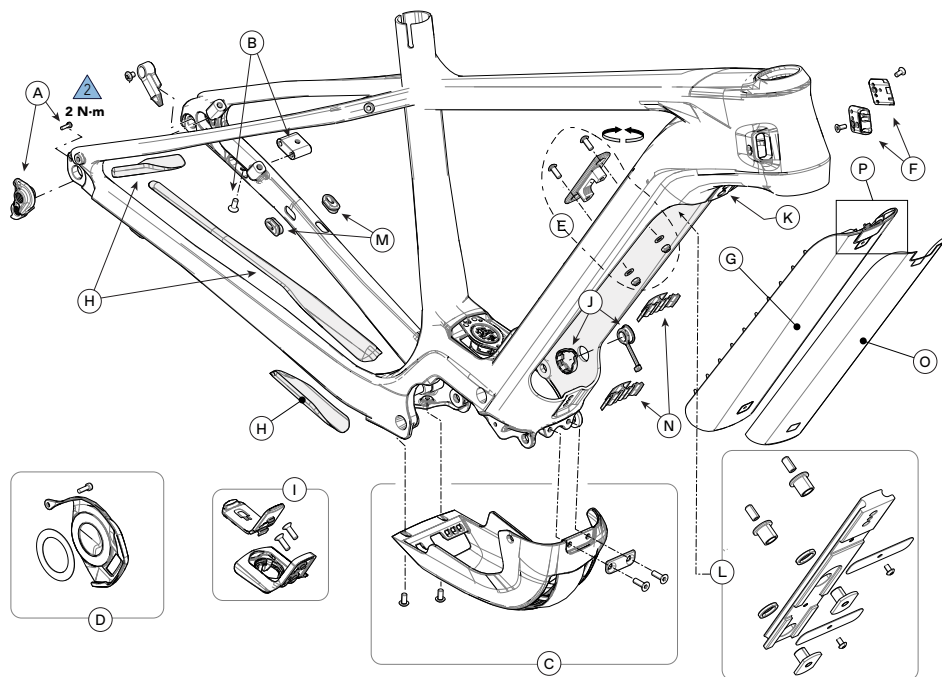
Special Note: The upper and lower rail assembly fixing bolts enable the cover to be adjusted for best cosmetic fit between frame and installed battery. The screws, accessible on the front of the cover, are concealed by foil.



Identification

- | | |
|------------------------|----------------------|
| 1. Battery cover | 5. Battery slots |
| 2. Battery | 6. Plug side |
| 3. Battery cover latch | 7. Lock side |
| 4. Cover rails | 8. Battery connector |

REPLACEMENT PARTS



Frame

| ID | Part Number | Description |
|----|-------------|--|
| A | CK3257U000S | Derailleur Hanger TA ST SS 015 |
| B | K31010 | Flip Chip Kickstand Bracket |
| C | K34080 | Motor Skid Plate Hardtail v2 |
| D | K34060 | NDS Adhesive Motor Cover |
| E | K76080 | DT Powerpack Flip Bracket |
| F | K32250 | Modular Cable Guides 4-5-5 (QTY 2) |
| G | K344110 | Battery Cover DT Bottom Exit 625Wh BLK |
| H | K34340 | E Hardtail CS SS Protectors |
| I | K76030 | COB DT Battery Holder Bracket |

| ID | Part Number | Description |
|----|-------------|---------------------------------------|
| J | K34140 | Key Cover w/ Leash |
| K | K76070 | Battery Cover Mounting Washer (QTY 3) |
| L | K76081 | Battery Rail DT Bottom Exit 625Wh |
| M | KP312/ | Open Oval Grommet (QTY 10) |
| N | K32040 | DT Adhesive Cable Guide (QTY 3) |
| O | K34321 | E-Hardtail Battery Cover Protector |
| P | K34150 | DT Bottom Exit Latch v1.2 |

E-BIKE MAINTENANCE

Before and After Each Ride:

- Clean and visually inspect the entire bike for cracks or damage. See “Inspect for Safety” in your Cannondale Bicycle Owner’s Manual.
- Make sure the battery is fully charged and mounted securely. Follow the drive system charging instructions. Battery charge discharge capacity will decline with usage. Have the older battery replaced when it fails to charge within the time indicated and/or to provide power reliably.
- Test the drive-assist system, make sure the drive system functions normally.
- If your e-bike model was equipped with a lighting system (e.g., brake lights, headlights, taillights, and/or number plate illumination), ensure each light functions properly.
- Check for proper function of the front and rear brakes. Brake pad and rotor wear is typically greater on e-bikes than on pedal-only bikes, requiring more-frequent inspection and replacement.
- Check tire pressures and the condition of the wheels. Ensure the tires are not damaged and do not have excessive wear. Ensure no wheel parts are broken or missing and that the wheels are firmly attached to the bike via secured skewers/axles.
- Confirm the drive chain is in good condition, is clean, and is well lubricated. Chain wear is typically greater on e-bikes than on pedal-only bikes, requiring more-frequent inspection and replacement. Ensure the gears operate normally throughout the entire range.
- Inspect the condition of the electrical cables, ensuring no kinks or abrasive wear. Check that cables near the dropouts are assembled properly to avoid contact with the brake rotors.

WARNING

Perform a pre-ride-check before and after each ride. Frequent checks are necessary to identify and correct problems that can lead to an accident. Do not ride your bike if it does not operate normally or has broken, damaged, or missing parts. Have any damage inspected and repaired by your Cannondale Dealer before riding again.

You can be severely injured, paralyzed or killed in an accident if you ignore this warning.

Maintaining Your Bike

1. Read your **Cannondale Bicycle Owner's Manual** for information on the owner's responsibility for routine inspection and maintenance of your bike.

Consult with your Authorized Cannondale Dealer to create a complete maintenance program for your riding style, components, and conditions of use.

Follow the maintenance recommendations given by the component manufacturers for the various parts of your bike.

2. It is recommended after the first 150 km, bring your bike to your Authorized Cannondale Dealer for an initial check-up. It should include checks of the drive-assist system, drive chain condition, proper shifting, accessories, wheels and tire condition, brakes, etc. This visit will help you establish a schedule for repeated visits appropriate for how and where you ride.
3. Every 1000 km, bring your bike in to your Authorized Cannondale Dealer for a regular detailed inspection, adjustment, and replacement of wear items across the entire bike. E-bikes can wear out wheels, tires, drive chains, and brakes faster.

Maintaining Your Bike's Drive System

NOTICE

Drive-assist system components must only be serviced at an authorized service center. This will ensure the quality and safety of the drive-assist system.

Never attempt to open or remove drive system parts from the frame, or to work on them yourself. Other components of the drive system (e.g. drive chain, front chain ring, rear cassette, rear derailleur, crank arm) must be serviced by an Authorized Cannondale Dealer.

Replacement parts must be identical to the original Cannondale specification for the bike. Failure to replace components with original specification can result in serious overload or in other damage to the drive unit.

Unauthorized opening or servicing of the drive unit will void the warranty.

Cleaning

When cleaning your bike, use a damp sponge or a soft brush with only a mild soap and water solution. Rinse the sponge often. Do not spray water directly on controls or on drive system components.

NOTICE

Do not use a pressure washer or dry with compressed air. This will force contaminants into sealed areas or into electrical connections/components, promoting corrosion and resulting in immediate damage or in accelerated wear.



WARNING

Keep water away from the electrical components.

Make sure the bike is secured upright and cannot fall over accidentally while you are cleaning it.

Don't rely on the kickstand. Use a bicycle wheel-stand or work-stand to hold the bike upright while you are cleaning it.

www.cannondale.com

© 2020 Cycling Sports Group

Tesoro Neo X Speed Owner's Manual Supplement

138244 Rev 1

Cannondale USA

Cycling Sports Group, Inc.

1 Cannondale Way,

Wilton CT, 06897, USA

1-800-726-BIKE (2453)

www.cannondale.com

Cannondale Europe

Mail: Postbus 5100

Visits: Hanzepoort 27

7570 GC, OLDENZAAL, Netherlands

service@cyclingsportsgroup.com

Cannondale UK

Cycling Sports Group

Vantage Way, The Fulcrum,

Poole, Dorset, BH12 4NU

+44 (0)1202732288

sales@cyclingsportsgroup.co.uk